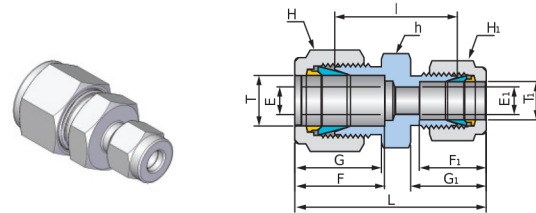


Reducing Union

URU



Connects Fractional(Inch) Tube

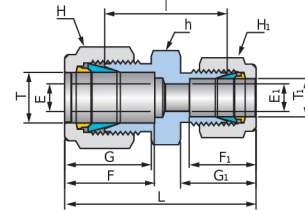
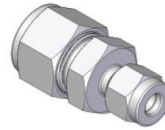
Part No.	Tube OD T		Tube OD T ₁		Dimensions (mm)													
	inch	mm	inch	mm	E Min.	E ₁ Min.	h		H		H ₁		F	F ₁	G	G ₁	I	L
							inch	mm	inch	mm	inch	mm						
URU-0201	1/8	3.17	1/16	1.68	2.3	1.3	7/16	11.11	7/16	11.11	5/16	7.93	12.8	9.0	15.4	11.1	20.6	31.4
URU-0301	3/16	4.76	1/16	1.68	3.0	1.3	7/16	11.11	1/2	12.70	5/16	7.93	14.0	9.0	16.4	11.1	21.9	32.8
URU-0302	3/16	4.76	1/8	3.17	3.0	2.3	7/16	11.11	1/2	12.70	7/16	11.11	14.0	12.8	16.4	15.4	23.4	37.1
URU-0401	1/4	6.35	1/16	1.68	4.8	1.3	1/2	12.70	9/16	14.28	5/16	7.93	15.1	9.0	17.4	11.1	23.1	34.3
URU-0402	1/4	6.35	1/8	3.17	4.8	2.3	1/2	12.70	9/16	14.28	7/16	11.11	15.1	12.8	17.4	15.4	24.6	38.6
URU-0403	1/4	6.35	3/16	4.76	4.8	3.0	1/2	12.70	9/16	14.28	1/2	12.70	15.1	14.0	17.4	16.4	25.4	39.5
URU-0502	5/16	7.93	1/8	3.17	6.4	2.3	9/16	14.28	5/8	15.87	7/16	11.11	16.6	12.8	18.8	15.4	25.9	40.4
URU-0504	5/16	7.93	1/4	6.35	6.4	4.8	9/16	14.28	5/8	15.87	9/16	14.28	17.0	15.1	19.0	17.4	27.4	42.3
URU-0602	3/8	9.52	1/8	3.17	7.0	2.3	5/8	15.87	11/16	17.46	7/16	11.11	16.7	12.8	18.9	15.4	26.9	41.0
URU-0604	3/8	9.52	1/4	6.35	7.0	4.8	5/8	15.87	11/16	17.46	9/16	14.28	16.7	15.1	18.9	17.4	28.4	42.9
URU-0605	3/8	9.52	5/16	7.93	6.4	6.4	5/8	15.87	11/16	17.46	5/8	15.87	16.7	16.6	18.9	18.8	29.5	44.5
URU-0802	1/2	12.7	1/8	3.17	10.0	2.3	13/16	20.63	7/8	22.22	7/16	11.11	22.7	12.8	21.6	15.4	27.9	44.7
URU-0804	1/2	12.7	1/4	6.35	10.0	4.8	13/16	20.63	7/8	22.22	9/16	14.28	22.7	15.1	21.6	17.4	29.5	46.7
URU-0806	1/2	12.7	3/8	9.52	10.0	7.0	13/16	20.63	7/8	22.22	11/16	17.46	22.7	16.7	21.6	18.9	31.0	48.3
URU-1006	5/8	15.87	3/8	9.52	12.0	7.0	15/16	23.81	1	25.40	11/16	17.46	24.5	16.7	22.0	18.9	31.8	49.3
URU-1008	5/8	15.87	1/2	12.7	12.0	10.0	15/16	23.81	1	25.40	7/8	22.22	24.5	22.7	22.0	21.6	31.8	52.0
URU-1204	3/4	19.05	1/4	6.35	16.0	4.8	1-1/16	26.98	1-1/8	28.57	9/16	14.28	24.4	15.1	21.9	17.4	31.8	49.1
URU-1206	3/4	19.05	3/8	9.52	16.0	7.0	1-1/16	26.98	1-1/8	28.57	11/16	17.46	24.4	16.7	21.9	18.9	33.3	50.7
URU-1208	3/4	19.05	1/2	12.7	16.0	10.0	1-1/16	26.98	1-1/8	28.57	7/8	22.22	24.4	22.7	21.9	21.6	33.3	53.4
URU-1210	3/4	19.05	5/8	15.87	16.0	12.0	1-1/16	26.98	1-1/8	28.57	1	25.40	24.4	24.5	21.9	22.0	33.3	53.6
URU-1608	1	25.4	1/2	12.7	22.0	10.0	1-3/8	34.92	1-1/2	38.10	7/8	22.22	31.1	22.7	26.1	21.6	40.9	63.0
URU-1612	1	25.4	3/4	19.05	22.0	16.0	1-3/8	34.92	1-1/2	38.10	1-1/8	28.57	31.1	24.4	26.1	21.9	40.9	63.1
URU-2016	1-1/4	31.75	1	25.4	22.0	22.0	1-3/4	44.44	1-7/8	47.63	1-1/2	38.10	40.8	31.1	38.5	26.1	45.0	78.9

Dimensions are for reference only and are subject to change without prior notice.
E is minimum opening. F, G and L are typical finger tight.

Tube to Tube

Reducing Union

URU



Connects Metric Tube

Part No.	Tube OD T	Tube OD T ₁	Dimensions (mm)										
	mm	mm	E Min.	E ₁ Min.	h mm	H mm	H ₁ mm	F	F ₁	G	G ₁	I	L
URU-M06M03	6	3	4.8	2.3	12.70	14.28	11.11	15.3	12.7	17.6	15.3	24.6	38.7
URU-M06M04	6	4	4.8	2.3	12.70	14.28	12.70	15.3	13.7	17.6	16.1	25.4	39.3
URU-M08M06	8	6	6.4	4.8	14.28	15.87	14.28	16.3	15.3	18.7	17.6	27.4	42.4
URU-M10M06	10	6	8.0	4.8	17.46	19.05	14.28	17.3	15.3	19.5	17.6	29.5	44.6
URU-M12M06	12	6	9.5	4.8	20.63	22.22	14.28	22.8	15.3	21.7	17.6	29.5	47.0
URU-M12M08	12	8	9.5	6.4	20.63	22.22	15.87	22.8	16.3	21.7	18.7	30.2	47.9
URU-M12M10	12	10	9.5	8.0	20.63	22.22	19.05	22.8	17.3	21.7	19.5	31.0	48.8
URU-M16M10	16	10	12.0	8.0	23.81	25.40	19.05	24.5	17.3	22.0	19.5	32.5	50.4
URU-M16M12	16	12	12.0	9.5	23.81	25.40	22.22	24.5	22.8	22.0	21.7	31.8	52.1
URU-M18M12	18	12	16.0	9.5	26.98	30.16	22.22	24.5	22.8	22.0	21.7	33.3	53.6
URU-M25M18	25	18	22.0	15.1	34.92	38.10	30.16	31.1	24.5	26.1	22.0	38.6	60.9
URU-M25M20	25	20	22.0	16.0	34.92	38.10	31.75	31.1	26.2	26.1	22.1	39.9	62.2

Connects Metric Tube to Fractional(Inch) Tube

Part No.	Tube OD T	Tube OD T ₁		Dimensions (mm)												
	mm	inch	mm	E Min.	E ₁ Min.	h mm	H inch	H ₁		F	F ₁	G	G ₁	I	L	
URU-M0402	4	1/8	3.17	3.0	2.3	11.11	1/2	12.70	7/16	11.11	13.7	12.8	16.1	15.4	23.4	36.7
URU-M0404	4	1/4	6.35	2.8	4.8	14.28	1/2	12.70	9/16	14.28	13.7	15.1	16.1	17.4	25.4	39.1
URU-M0602	6	1/8	3.17	4.8	2.3	12.70	9/16	14.28	7/16	11.11	15.3	12.8	17.6	15.4	24.6	38.8
URU-M0604	6	1/4	6.35	4.8	4.8	12.70	9/16	14.28	9/16	14.28	15.3	15.1	17.6	17.4	26.2	40.8
URU-M0605	6	5/16	7.93	4.8	6.4	14.28	9/16	14.28	5/8	15.87	15.3	16.6	17.6	18.8	27.4	42.5
URU-M0804	8	1/4	6.35	6.4	4.8	14.28	5/8	15.87	9/16	14.28	16.3	15.1	18.7	17.4	27.4	42.2
URU-M1004	10	1/4	6.35	8.0	4.8	17.46	3/4	19.05	9/16	14.28	17.3	15.1	19.5	17.4	29.5	44.4
URU-M1006	10	3/8	9.52	8.0	7.0	17.46	3/4	19.05	11/16	17.46	17.3	16.7	19.5	18.9	31.0	46.0
URU-M1206	12	3/8	9.52	9.5	7.0	20.63	7/8	22.22	11/16	17.46	22.8	16.7	21.7	18.9	31.0	48.4
URU-M1208	12	1/2	12.7	9.5	9.5	20.63	7/8	22.22	7/8	22.22	22.8	22.7	21.7	21.6	31.0	51.1
URU-M1508	15	1/2	12.7	12.0	10.0	23.81	1	25.40	7/8	22.22	24.4	22.7	21.9	21.6	31.8	52.0

Dimensions are for reference only and are subject to change without prior notice.
E is minimum opening. F, G and L are typical finger tight.